

Figure 13.1: Site Location

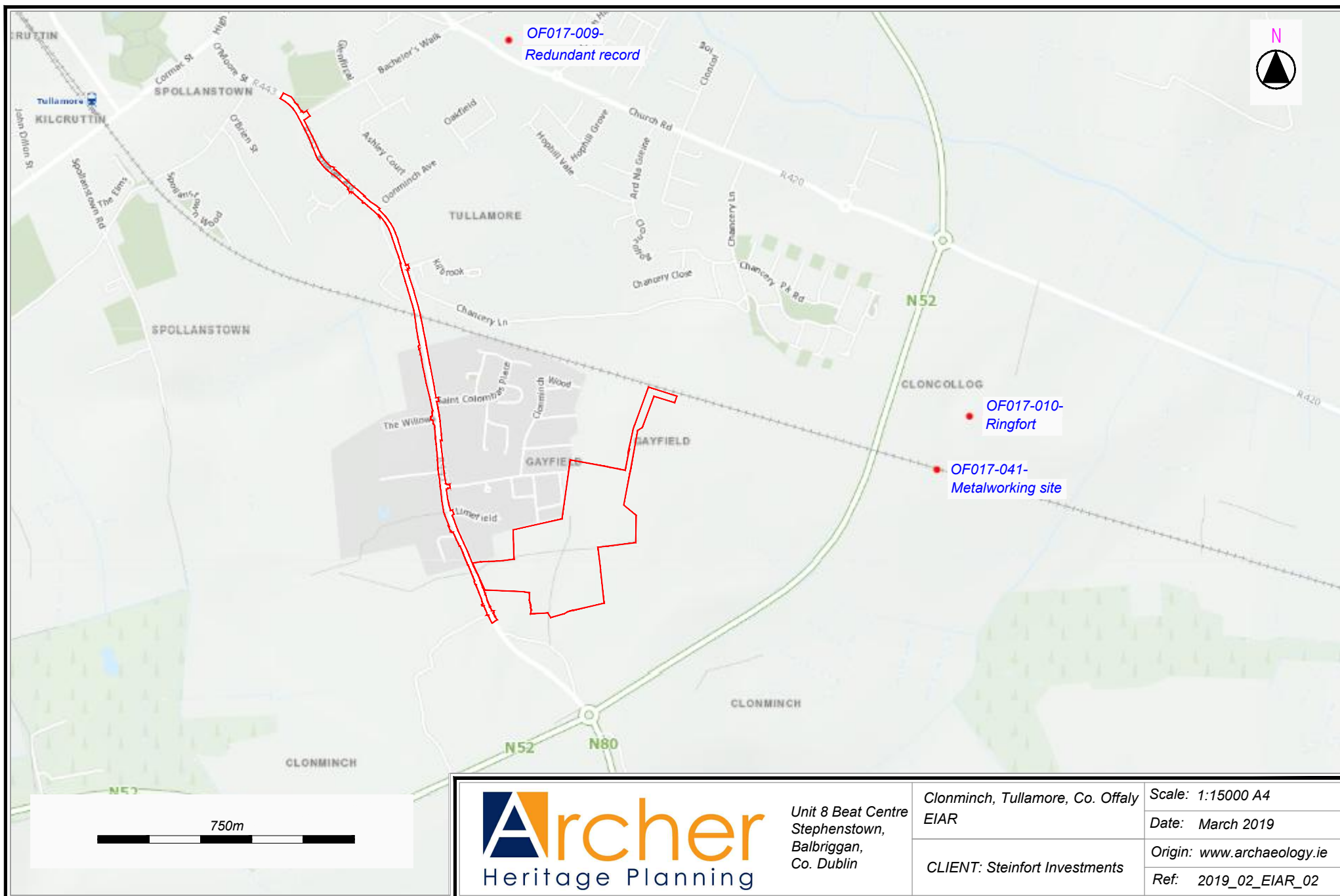
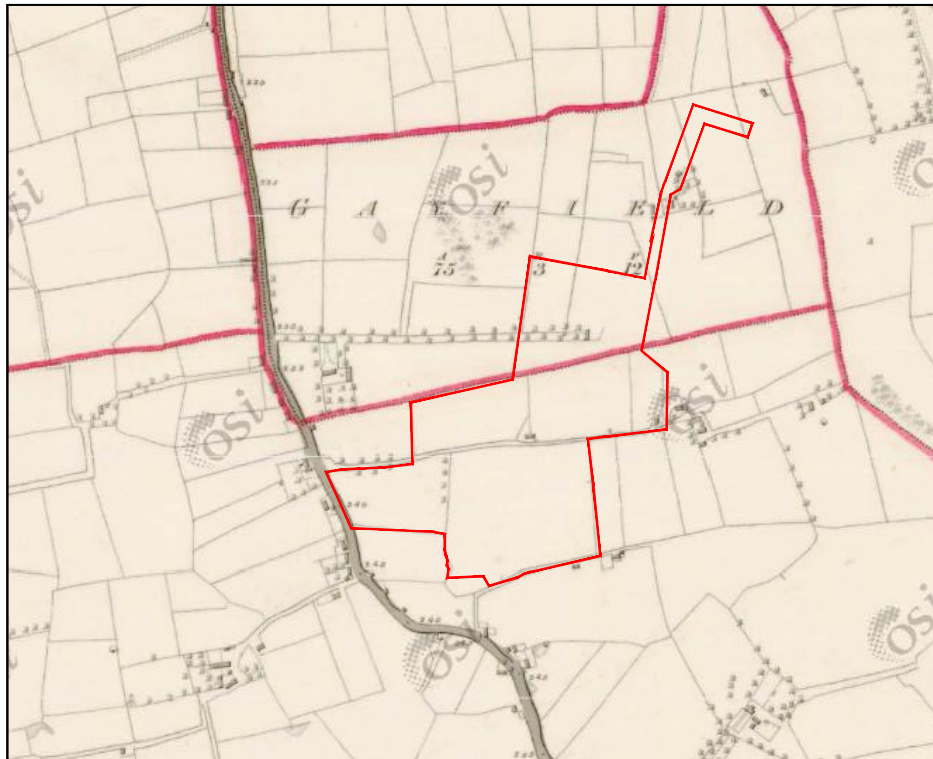
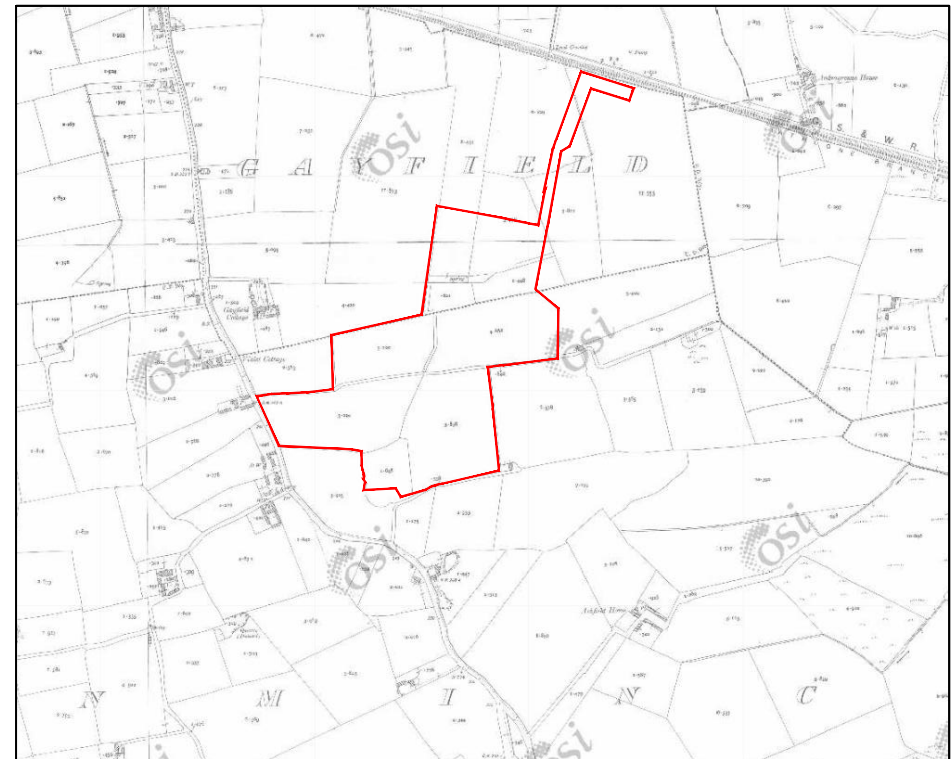


Figure 13.2: RMP/SMR sites within 1km of site



(l) 1st Edition OS Map (1838)
(r) 3rd Edition OS Map (1909-10)



Unit 8 Beat Centre
Stephenstown,
Balbriggan,
Co. Dublin

Clonminch, Tullamore, Co. Offaly
EIAR

Client: Steinfort Investments

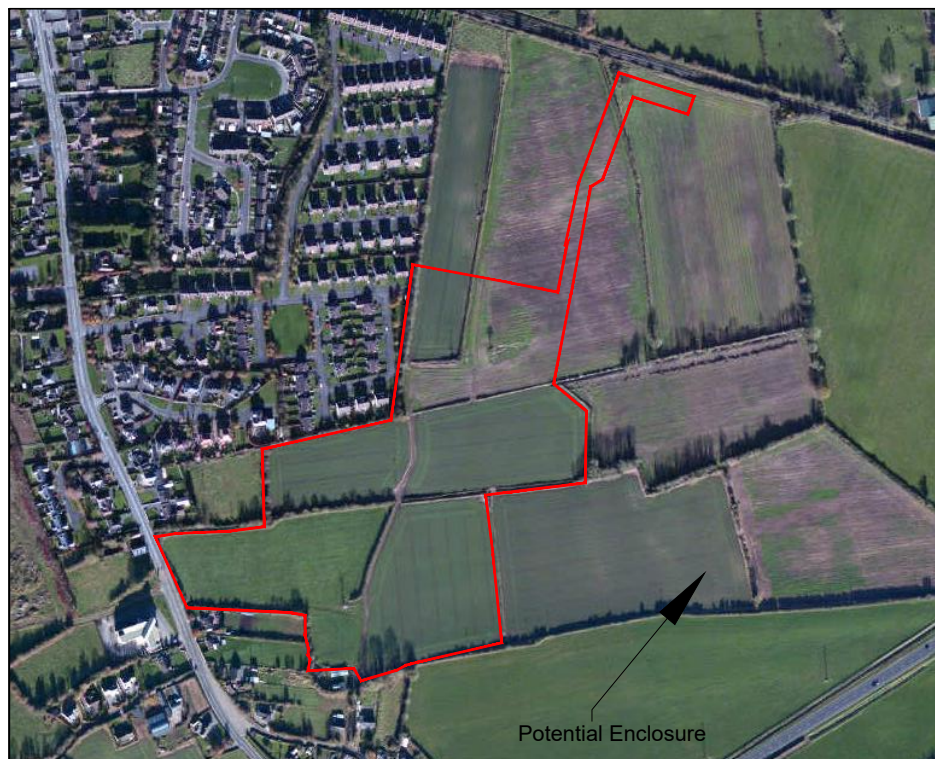
Scale: Not to scale

Date: May 2020

Origin: OSI

Ref: 2019_02_EIAR_03

Figure 13.3: Extracts from cartographic sources



(l) Digital Globe 2011-13
(r) Google Earth Jan 2019



Unit 8 Beat Centre
Stephenstown,
Balbriggan,
Co. Dublin

Clonminch, Tullamore, Co. Offaly
EIAR

Client: Steinfort Investments

Scale: Not to scale

Date: May 2020

Origin: OSI & Google Earth

Ref: 2019_02_EIAR_04

Figure 13.4: Extracts from aerial photographic sources

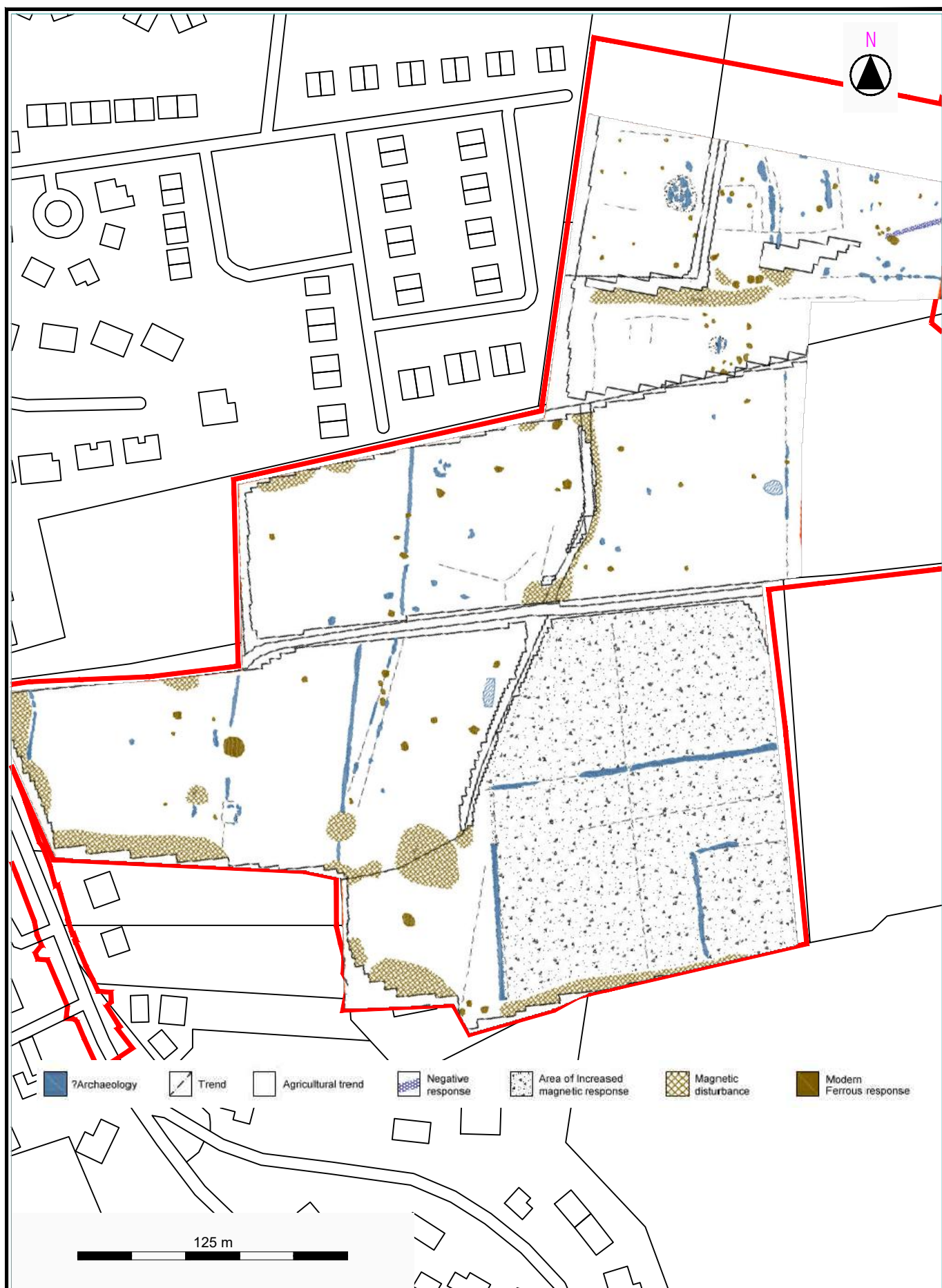


Figure 13.5: Results of Geophysical Survey

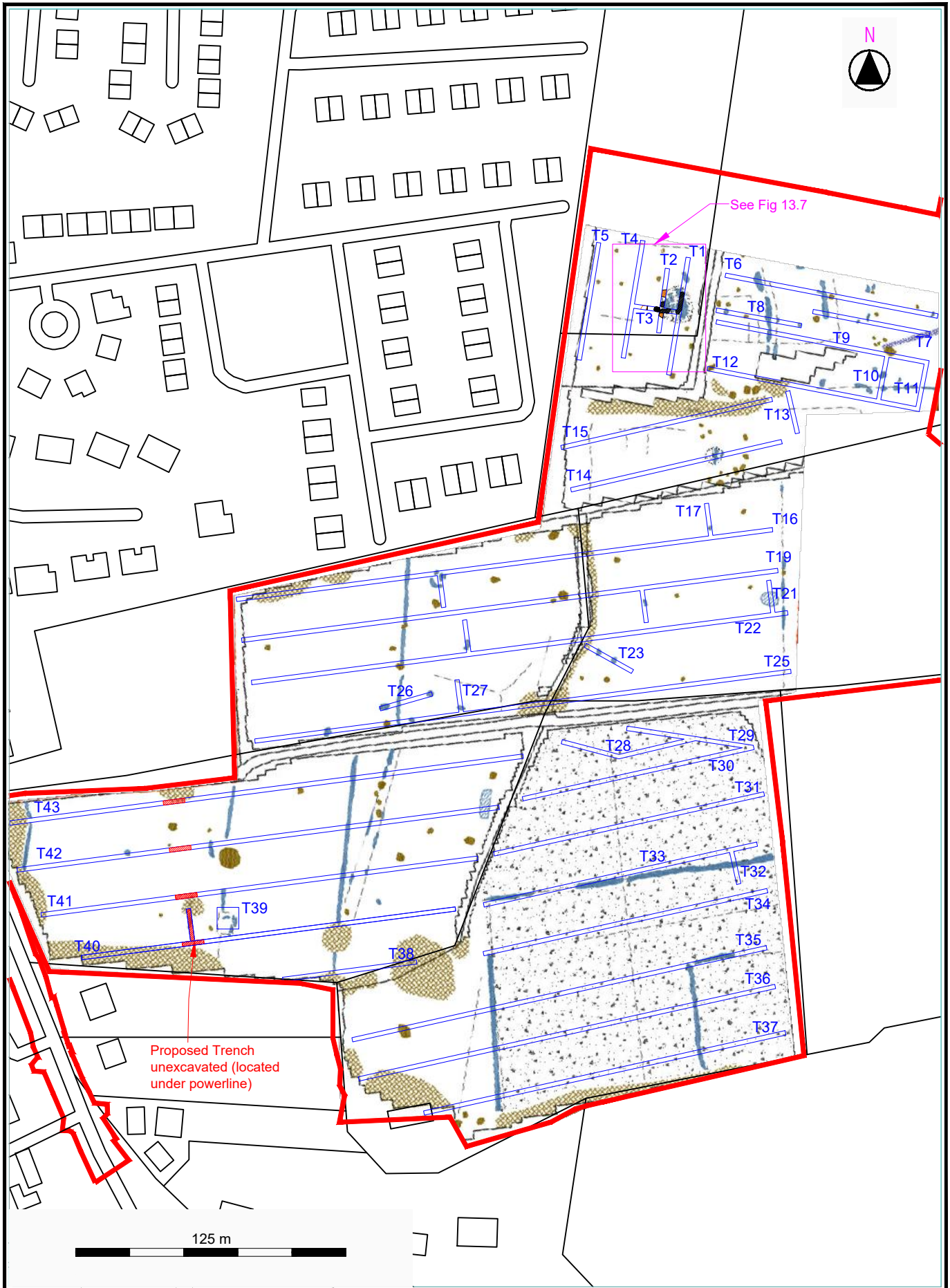
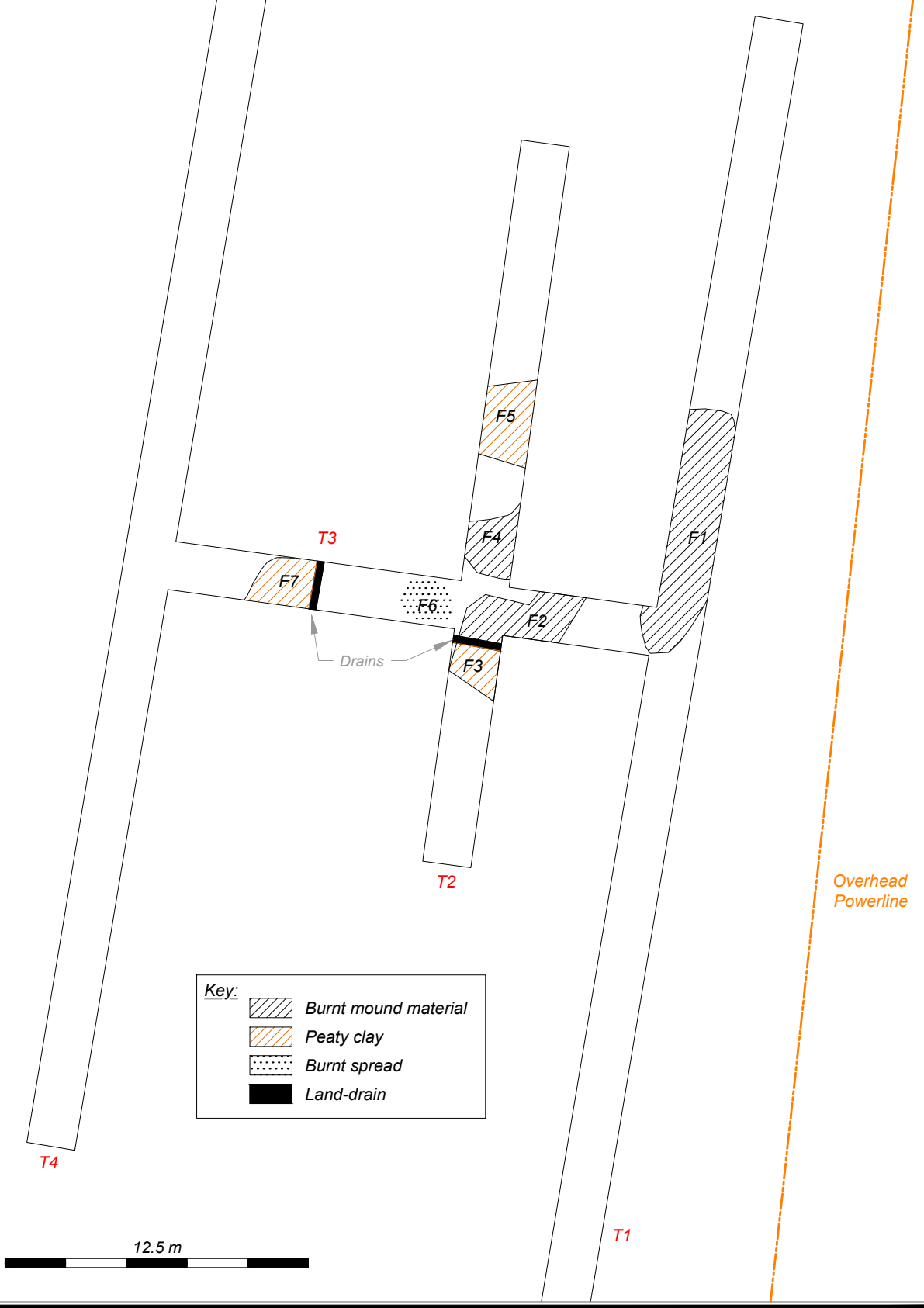


Figure 13.6: Results of Phase I Test Excavation



Key:

- Burnt mound material
- Peaty clay
- Land-drain

Figure 13.7: Phase I Test Excavation; Detail of Fulacht Fia 1

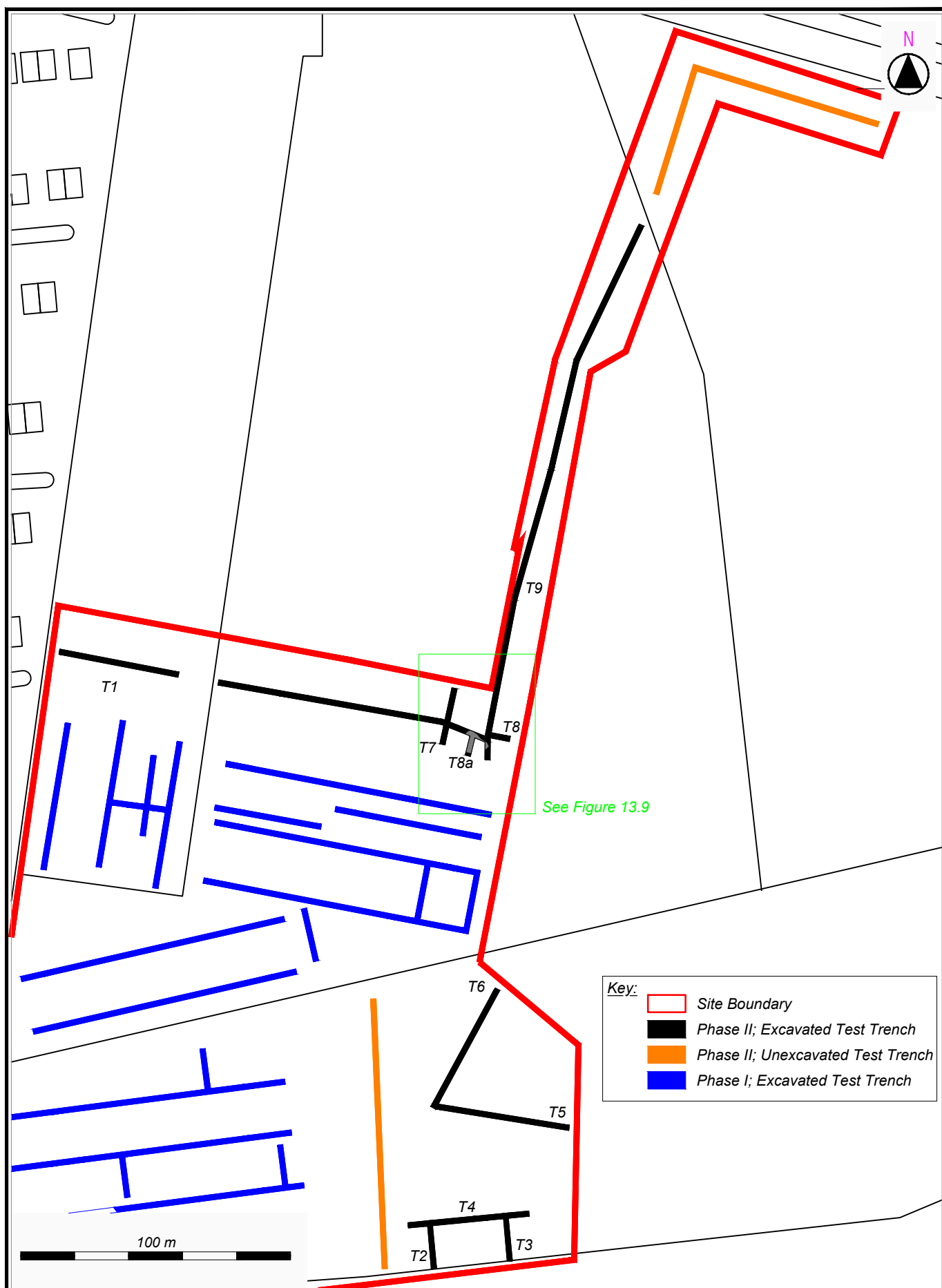


Figure 13.8: Location of Phase II Test Trenches

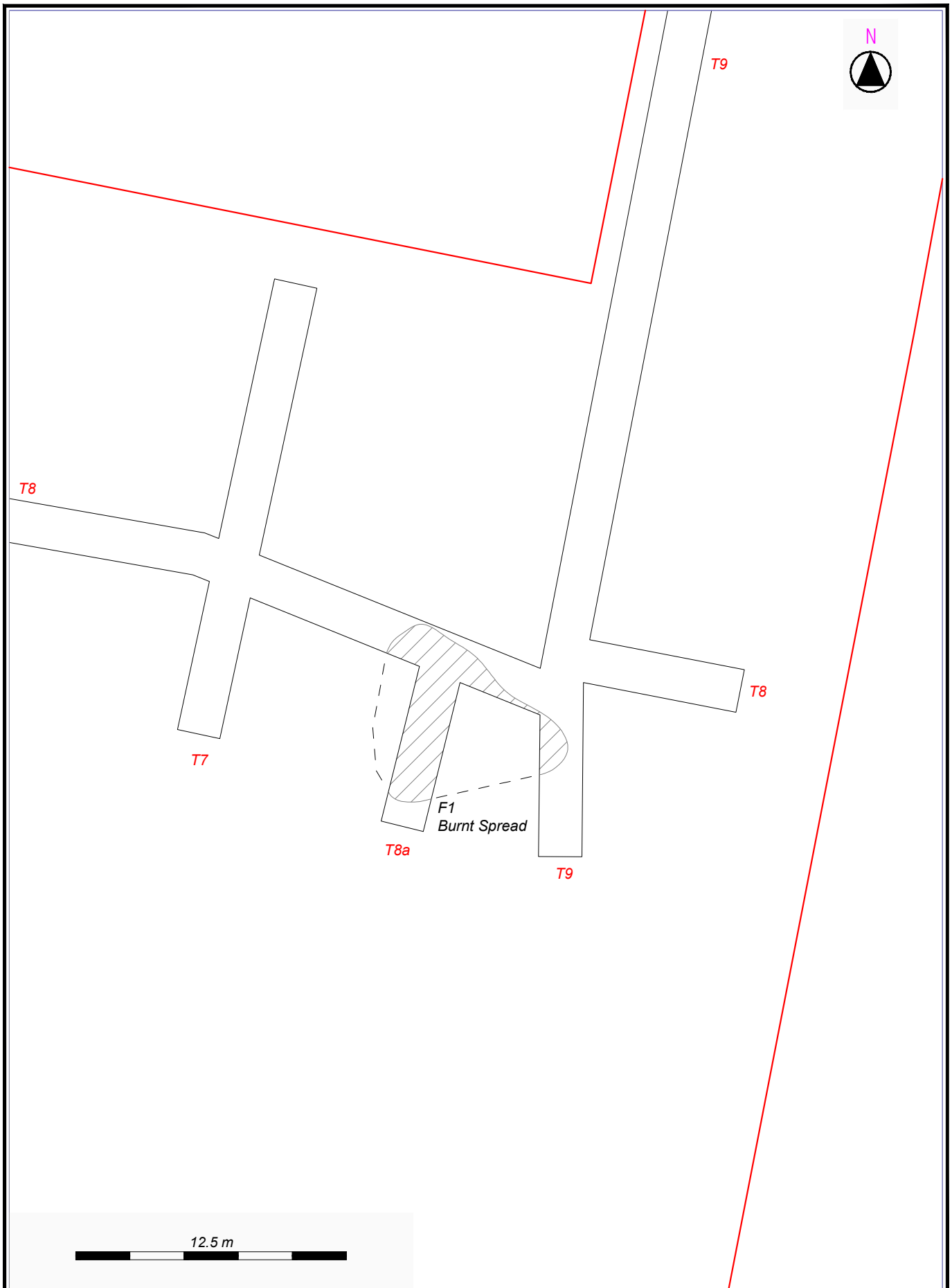


Figure 13.9: Phase II Test Excavation; Detail of Fulacht Fia 2

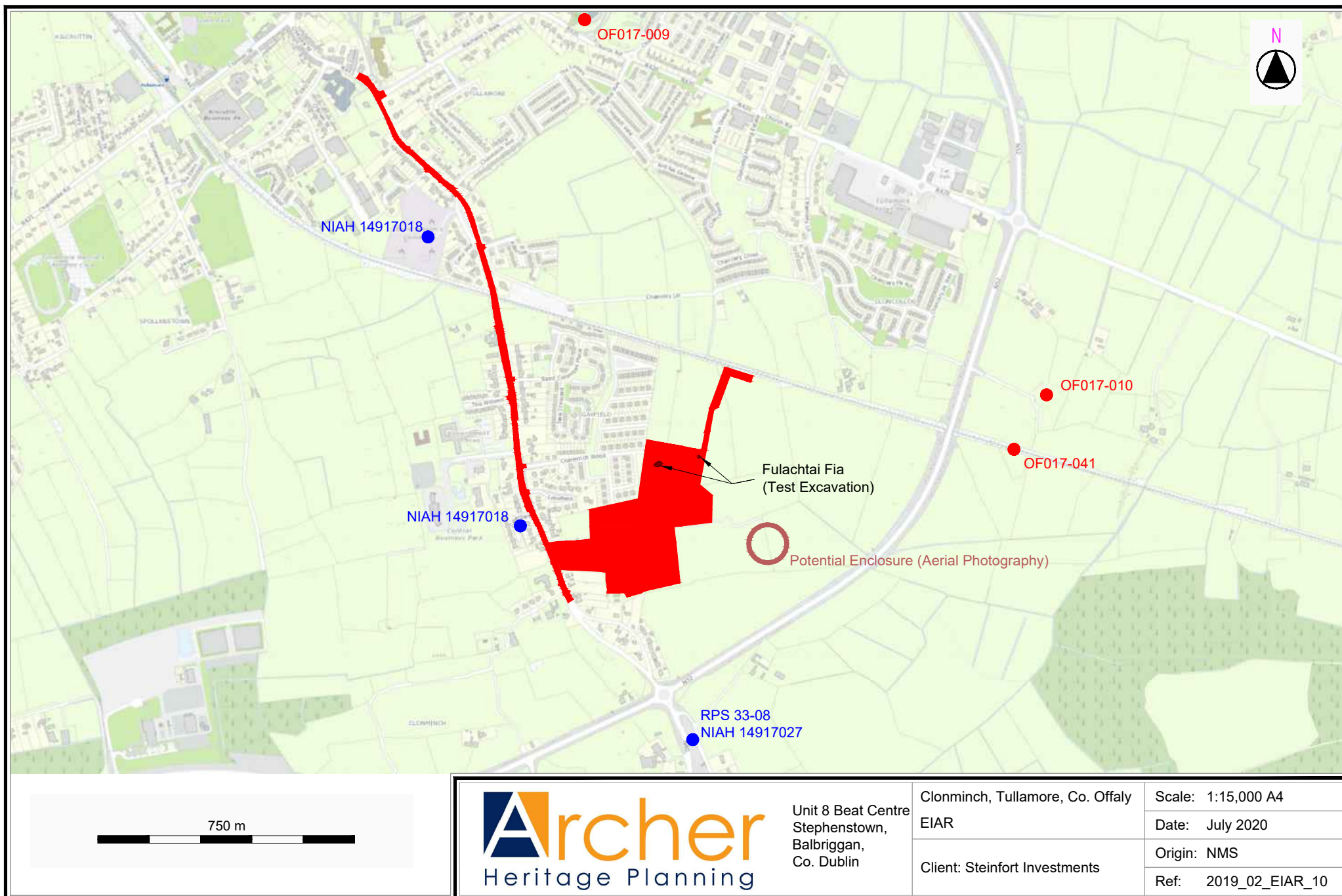


Figure 13.10: Summary of archaeological constraints

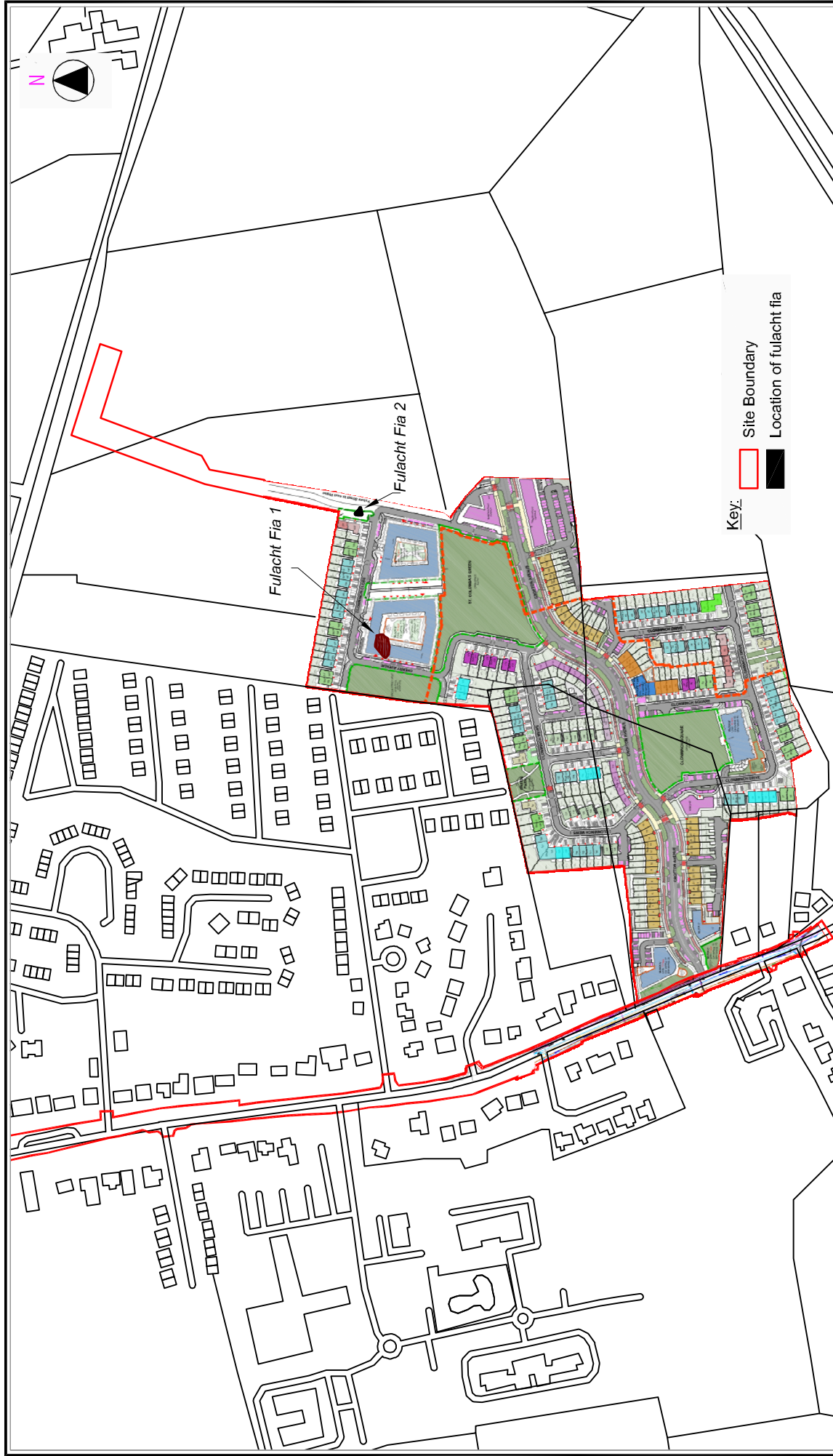


Figure 13.11: Proposed site layout and location of identified archaeological sites



Plate 13.1: Walkover Survey; SW portion of site from west



Plate 13.2: Walkover Survey; Northern portion of site from north



Plate 13.3: Phase I Test Excavation; View of *fulacht fia* 1 (F1, Trench 1 from south)



Plate 13.4: Phase I Test Excavation; Trench 2 from south showing remains of *Fulacht Fia* 1 (F4 in foreground & F5 in background)



Plate 13.5: Phase I Test Excavation; Trench 8 from east

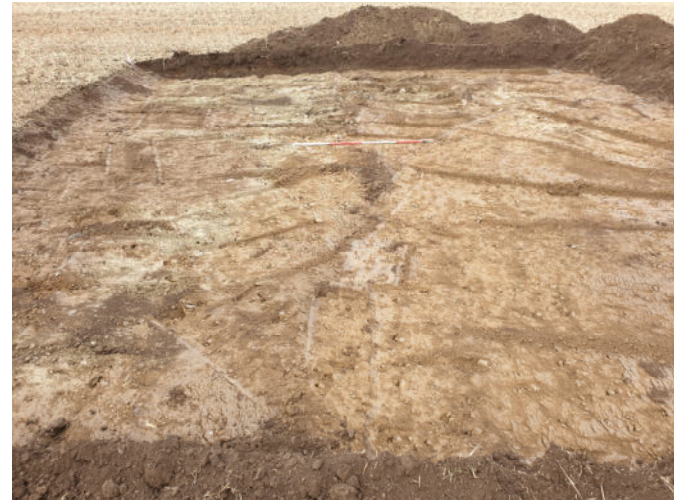


Plate 13.6: Phase I Test Excavation; Trench 37 from west



Plate 13.7: Phase II Test Excavation; Trench 8 from west showing *Fulacht Fia 2*



Plate 13.8: Phase II Test Excavation; Trench 8a from north showing *Fulacht Fia 2*



Plate 13.9: Phase II Test Excavation; Trench 1 from east



Plate 13.8: Phase II Test Excavation; Trench 9 from north